



Special Services & Programs

- Saturday Academy is an extended learning program available to all students for enrichment and support.
- Olweus Bullying Prevention Program to promote student empowerment and safety
- Community of Tampa Bay yearlong partnership for student empowerment, celebrating diversity, tolerance, and the promotion of civic virtues. This is a sixth-grade elective class.
- Overcoming obstacles curriculum as an elective class in the seventh and eighth grades
- We offer a full service gifted education curriculum
- Advancement Via Individual Determination (AVID) program
- Title I resources for reading and math
- Lego Club
- “SEW”cial club to promote and teach arts and crafts
- Robotics club
- Violence Prevention Curriculum in partnership with Gulf Coast Jewish Family & Community Services

Academic Achievements

- The percentage of eighth-graders proficient in science increased by five percentage points from 2012 to 2013.
- 92 percent of seventh-graders were rated proficient on the Algebra End of Course (EOC) exam in 2013.
- 98 percent of eighth-graders were rated proficient on the Geometry EOC exam in 2013.
- 30 percent of our Special Diploma students successfully completed level C (The highest level of REACH).

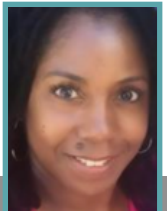
Points of Pride

- Meadowlawn is the only neighborhood middle school in south Pinellas County with a string orchestra.
- Math Mania District winner and the school received first-place honors in the Southeast for the week March 23, 2013.
- Received a Sea Perch grant from the University of Michigan and The Naval Engineering Education Center (NEEC). Sea Perch is a curriculum that teaches basic engineering and science concepts and allows students to test their knowledge by creating an underwater ROV or Sea Perch.
- The Meadowlawn Lancer Band achieved a Superior rating in 2012-2013. Superior is the highest rating given by the Florida Bandmasters Association.
- The Meadowlawn Band has earned a Superior rating the past 14 years in a row.
- Our Special Diploma students recycled more paper than any other middle school in Pinellas County. Our students also participate in Special Olympics bowling, basketball and track.



“As a school, Meadowlawn Middle School can do lots of things that will make a difference in a child’s life, but we have chosen to seek resources that will make student empowerment a real possibility. We are attentive to our school’s peer culture and how kids treat one another. We strive to build relationships with our students and foster a climate of positive student belonging.”

Ursula Parris, principal



About Meadowlawn Middle School

- Principal: Ursula Parris
- Grade levels: 6-8
- Enrollment: 1,250
- School hours: 9:30 a.m.–4:00 p.m.
- Attractor/focus: Meadowlawn Middle offers students many opportunities in the performing and visual arts, including chorus, drama, musical theater, band, jazz band, and string orchestra, 2-D and 3D art.
- Mascot: Lancer
- Before and after school care: YMCA
- Teaching staff: Twenty percent of faculty members have advanced degrees.
- Community Partnerships: Franklin Templeton, Pierce Chiropractic, Chick-fil-A, Dowdy Optical
- Computers and Technology: Cutting-edge computer technology, including new computer carts, response clickers, dedicated testing labs and business education labs



District Vision: 100% Student Success

District Mission: Educate and prepare each student for college, career and life



SCHOOL BOARD OF PINELLAS COUNTY

Carol J. Cook
Rene Flowers
Terry Krassner
Joanne Lentino
Linda S. Lerner
Eileen M. Long
Peggy L. O'Shea

SUPERINTENDENT
Dr. Michael A. Grego



MEADOWLAWN MIDDLE SCHOOL

6050 16th St. N
St. Petersburg, FL 33703
Phone: (727) 570-3097
FAX: (727) 570-3396
www.pcsb.org/meadowlawn-ms

SCHOOL MISSION

MMS will create a productive learning environment focused on producing self-disciplined students who will develop skills to become life-long learners.

The School Board of Pinellas County, Florida, prohibits any and all forms of discrimination and harassment based on race, color, sex, religion, national origin, marital status, age, sexual orientation or disability in any of its programs, services or activities.

www.pcsb.org



Meadowlawn Middle School



6050 16th St. N
St. Petersburg, FL 33703
Phone: (727) 570-3097
FAX: (727) 570-3396
www.pcsb.org/meadowlawn-ms